

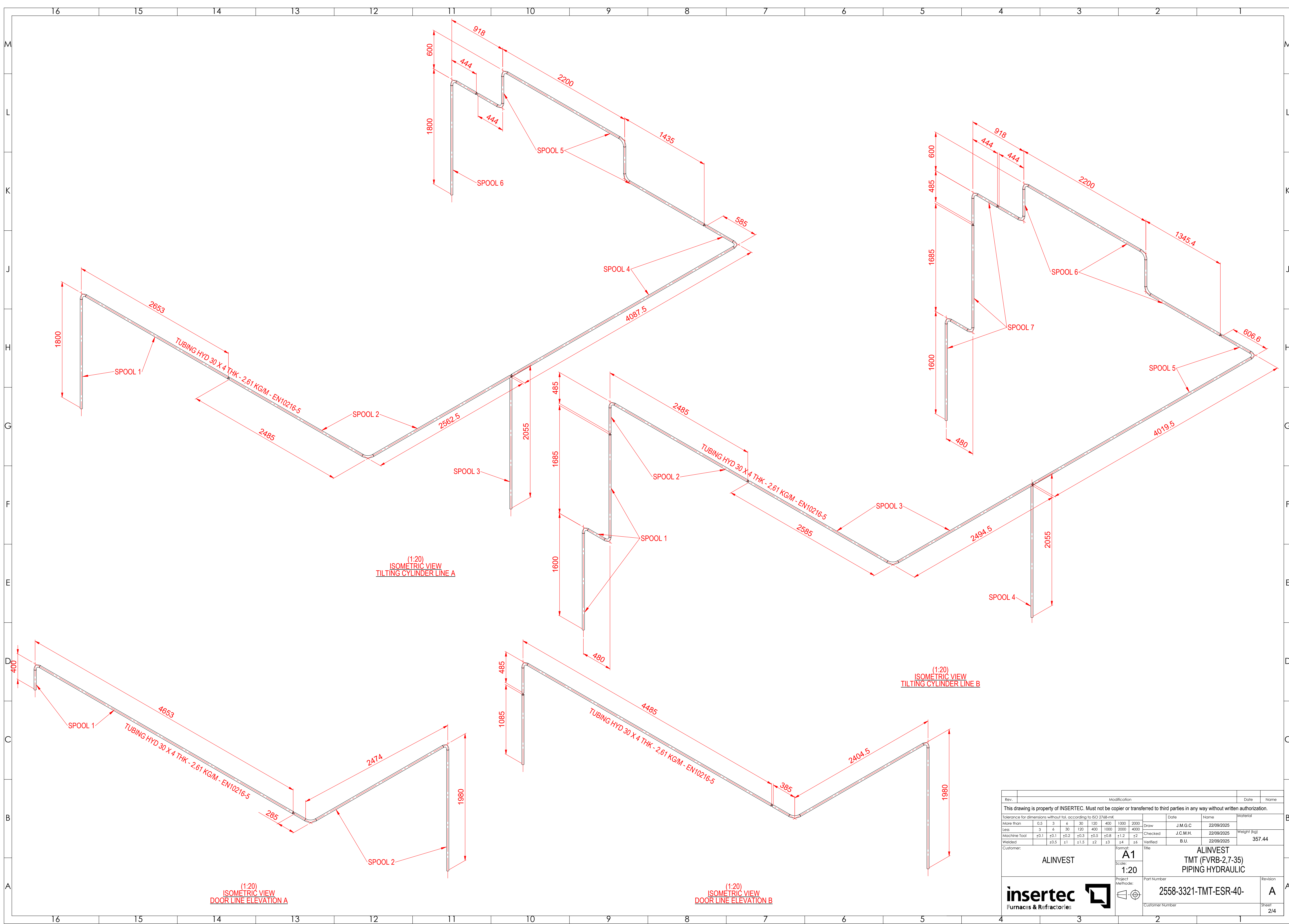
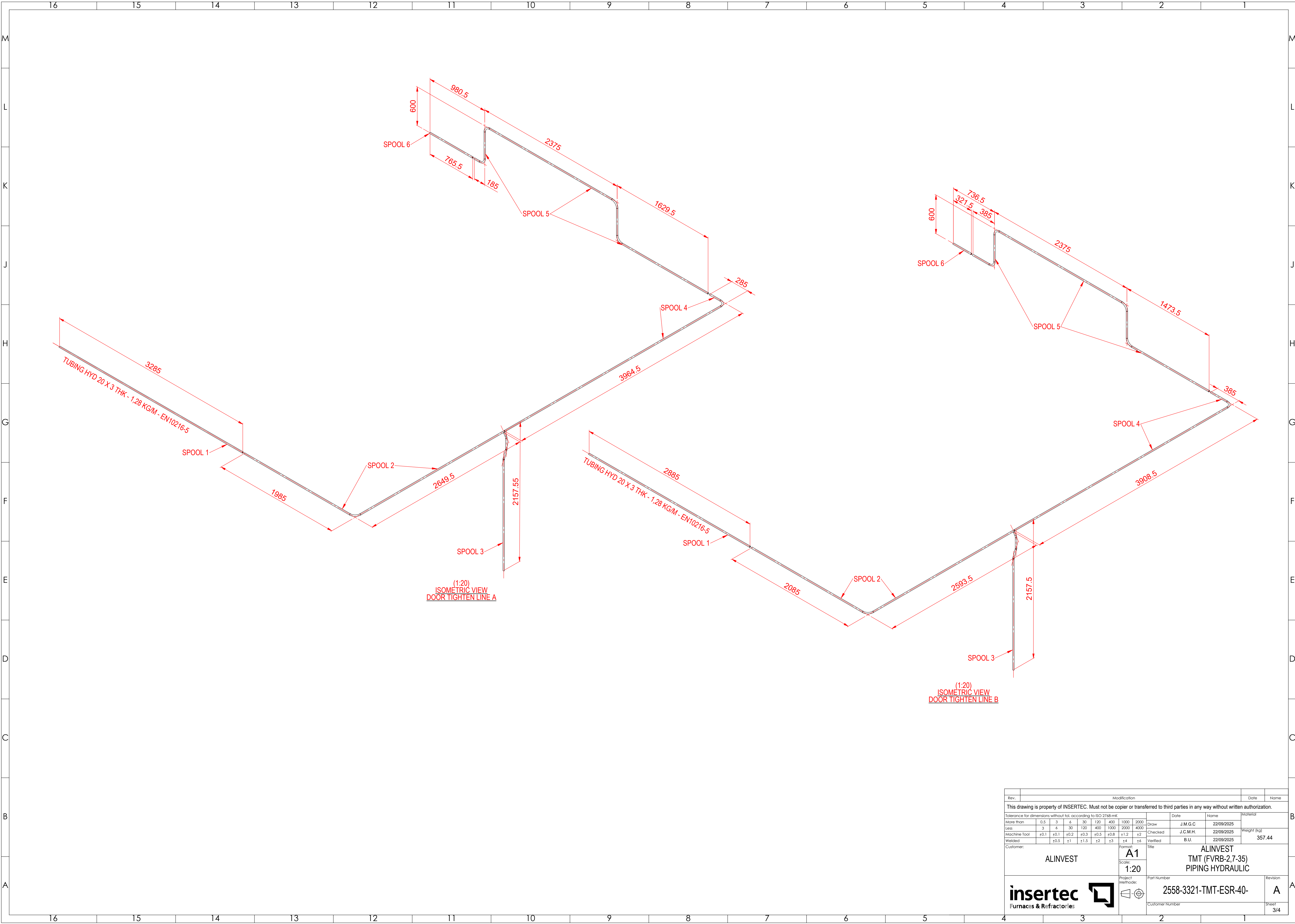




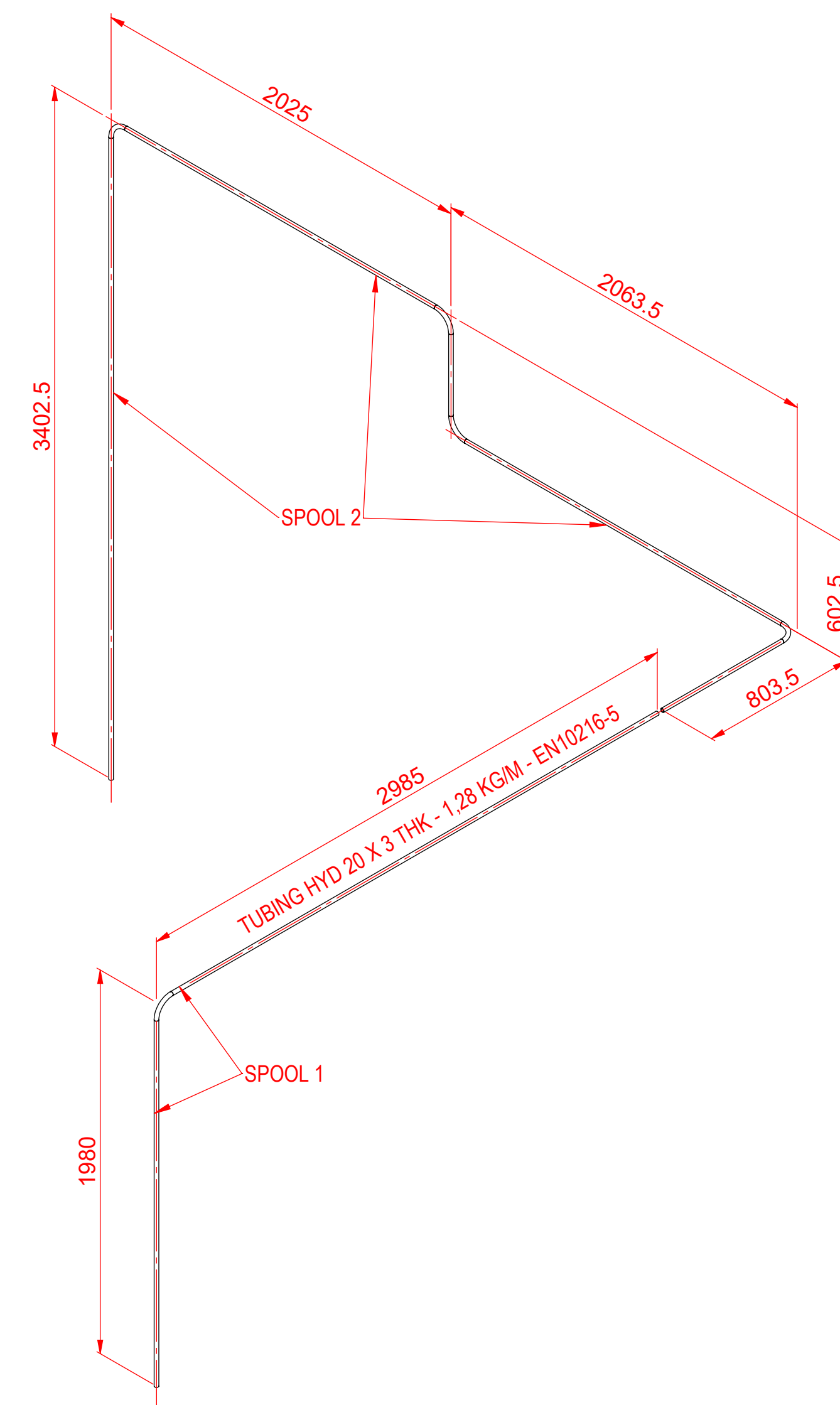
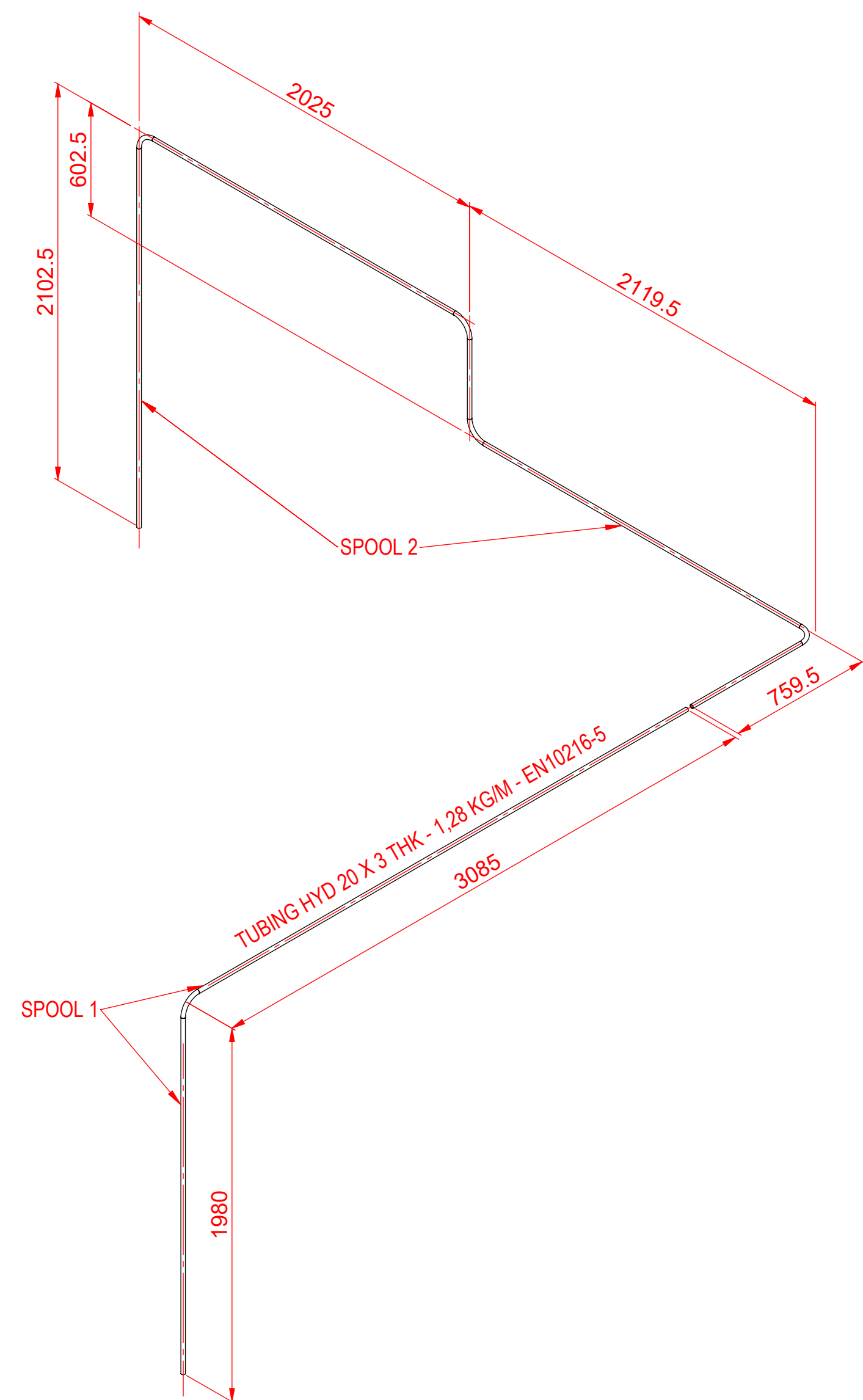
| Rev.  | Modification |      |      |      |      |      |      |                     |   |          |            | Date        | Name |          |
|---|--------------|------|------|------|------|------|------|---------------------|---|----------|------------|-------------|------|----------|
| This drawing is property of INSERTEC. Must not be copier or transferred to third parties in any way without written authorization.  |              |      |      |      |      |      |      |                     |   |          |            |             |      |          |
| Tolerance for dimensions without tol. according to ISO 2768-mK  |              |      |      |      |      |      |      |                     |   |          |            | Date        | Name | Material |
| More than   | 0.5          | 3    | 6    | 30   | 120  | 400  | 1000 | 2000                | Draw  | J.M.G.C  | 22/09/2025 | Weight (kg) |      |          |
| Less  | 3            | 6    | 30   | 120  | 400  | 1000 | 2000 | 4000                |   | J.C.M.H. | 22/09/2025 |             |      |          |
| Machine Tool  | ±0.1         | ±0.1 | ±0.2 | ±0.3 | ±0.5 | ±0.8 | ±1.2 | ±2                  | Checked   | B.U.     | 22/09/2025 |             |      |          |
| Welded  | ±0.5         | ±1   | ±1.5 | ±2   | ±3   | ±4   | ±6   | ±12                 | Verified  |          |            |             |      |          |
| Customer:   |              |      |      |      |      |      |      |                     | Format:   | ALINVEST |            |             |      |          |
| ALINVEST  |              |      |      |      |      |      |      | A1                  | ALINVEST<br>TMT (FVRB-2,7-35)<br>PIPING HYDRAULIC |          |            |             |      |          |
|   |              |      |      |      |      |      |      | Scale:              |   |          |            |             |      | 1:30     |
|   |              |      |      |      |      |      |      | Project             | Part Number                                       |          |            | Revision    |      |          |
|   |              |      |      |      |      |      |      | Method:             |   |          |            |             |      |          |
|   |              |      |      |      |      |      |      | 2558-3321-TMT-ESR40 |   |          | A          |             |      |          |
|   |              |      |      |      |      |      |      | Customer Number     |   |          | Sheet      |             |      |          |
|   |              |      |      |      |      |      |      |                     |   |          | 1/4        |             |      |          |



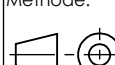






| Rev.  |      | Modification |      |      |      |      |      |      |          |                 |   | Date        | Name |
|---|------|--------------|------|------|------|------|------|------|----------|-----------------|---|-------------|------|
| This drawing is property of INSERTEC. Must not be copied or transferred to third parties in any way without written authorization.  |      |              |      |      |      |      |      |      |          |                 |   |             |      |
| Tolerance for dimensions without tol. according to ISO 2768-mK  |      |              |      |      |      |      |      |      |          | Date            | Name  | Material    |      |
| More than   | 0.5  | 3            | 6    | 30   | 120  | 400  | 1000 | 2000 | Draw     | J.M.G.C         | 22/09/2025  |             |      |
| Less  | 3    | 6            | 30   | 120  | 400  | 1000 | 2000 | 4000 | Checked  | J.C.M.H.        | 22/09/2025  | Weight (kg) |      |
| Machine Tool  | ±0.1 | ±0.1         | ±0.2 | ±0.3 | ±0.5 | ±0.8 | ±1.2 | ±2   | Verified | B.U.            | 22/09/2025  | 357.44      |      |
| Welded  | ±0.5 | ±1           | ±1.5 | ±2   | ±3   | ±4   | ±6   |      |          |                 |   |             |      |
| Customer:   |      |              |      |      |      |      |      |      |          | Format:         | Title   |             |      |
| ALINVEST  |      |              |      |      |      |      |      |      |          | A1              | ALINVEST<br>TMT (FVRB-2,7-35)<br>PIPING HYDRAULIC |             |      |
|   |      |              |      |      |      |      |      |      |          | Scale:<br>1:20  |   |             |      |
|   |      |              |      |      |      |      |      |      |          | Project Method: | Part Number                                       | Revision    |      |
|   |      |              |      |      |      |      |      |      |          |                 | 2558-3321-TMT-ESR-40-                             | A           |      |
|   |      |              |      |      |      |      |      |      |          | Customer Number | Sheet   |             |      |
|   |      |              |      |      |      |      |      |      |          |                 | 3/4   |             |      |



|  |              |   |      |   |      |                 |      |          |         |   |            |             |
|--|--------------|---|------|---|------|-----------------|------|----------|---------|---|------------|-------------|
| Rev.   | Modification |   |      |   |      |                 |      |          |         |   | Date       | Name        |
| This drawing is property of INSERTEC. Not to be copied or transferred to third parties in any way without written authorization. |              |   |      |   |      |                 |      |          |         |   |            |             |
| Tolerance for dimensions without tol. according to ISO 2768-mK   |              |   |      |   |      |                 |      |          |         |   |            |             |
| More than  | 0.5          | 3   | 4    | 35  | 120  | 400             | 1000 | 2000     | Draw    | Date  | Name       | Material    |
| Less   | 3            | 4   | 30   | 120   | 400  | 1000            | 2000 | 4000     |         | J.M.G.C   | 22/09/2025 |             |
| Machine Tool   | +0.1         | +0.1  | +0.2 | +0.3  | +0.5 | +0.8            | +1.2 | +2       | Checked | J.C.M.H.  | 22/09/2025 | Weight (kg) |
| Welded   | +0.1         | +0.5  | +1   | +1.5  | +2   | +3              | +4   | +6       |         | Verified  | B.U.       |             |
| Customer:  |              | ALINVEST  |      | Format:   |      | A1              |      | Title    |         | ALINVEST<br>TMT (FVRB-2,7-35)<br>PIPING HYDRAULIC |            |             |
|  |              |   |      | Scale:  |      | 1:20            |      |          |         |   |            |             |
| <br>Furnaces & Refractories                 |              |  |      |  |      | Part Number     |      | Revision |         | 2558-3321-TMT-ESR-40-<br><br>A                    |            |             |
|  |              |   |      |   |      | Customer Number |      | Sheet    |         |   |            |             |
|  |              |   |      |   |      |                 |      |          |         | 4/4   |            |             |